



Home at Papilon

Location: Santa Cruz

Lot size: 696 m²

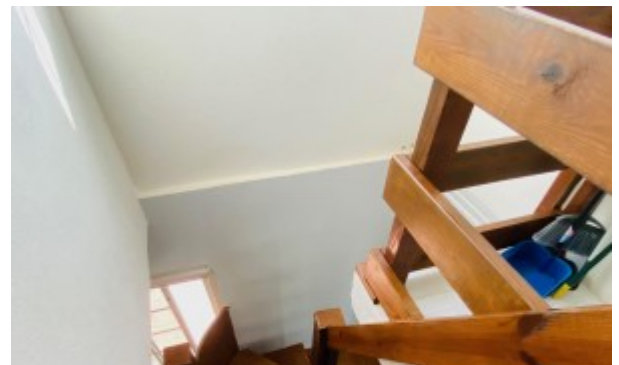
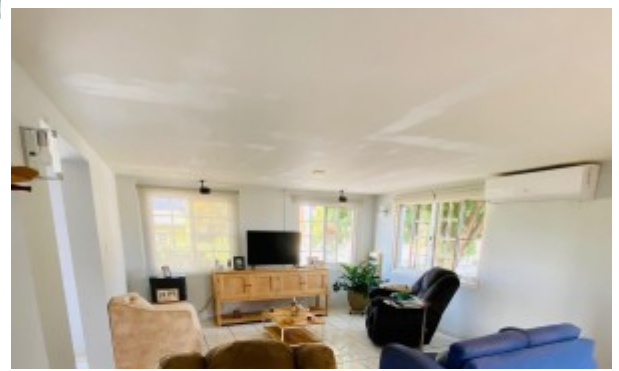
Price: 275000 USD

Built up size: 220 m²

Bathrooms: 2

Bedrooms: 2

Sold! Reduced from USD 295.000 to USD 275.000 This two-level corner dwelling is built on a lot of 696 m² land. The property is located on a public paved road in Papilon, a quiet are in Santa Cruz. You will find supermarkets, sport parks and local restaurants nearby. The living and dining areas and the open kitchen are located on the ground floor and the 2 master bedrooms are located on the first floor. A 360 degrees balcony around the first floor allows you to enjoy the great view from every angle! The home is surrounded by a huge garden with great space for a pool or gazebo. There is also a garage with remote electrical door. The lot size is 696 m². The built up size is 220 m². Contact Gwen Wever for a viewing or more information. Email: gwen@bhhsaruba.com Mobile: +(297) 593 7366



Read more on our website

Berkshire Hathaway HomeServices Aruba Realty

Website: bhhsaruba.com | Office number: +(297) 280-0047 | Email: info@bhhsaruba.com

Copyright © 2024 Berkshire Hathaway HomeServices Aruba Realty, LLC

An independently owned and operated franchisee of BHH Affiliates, LLC.